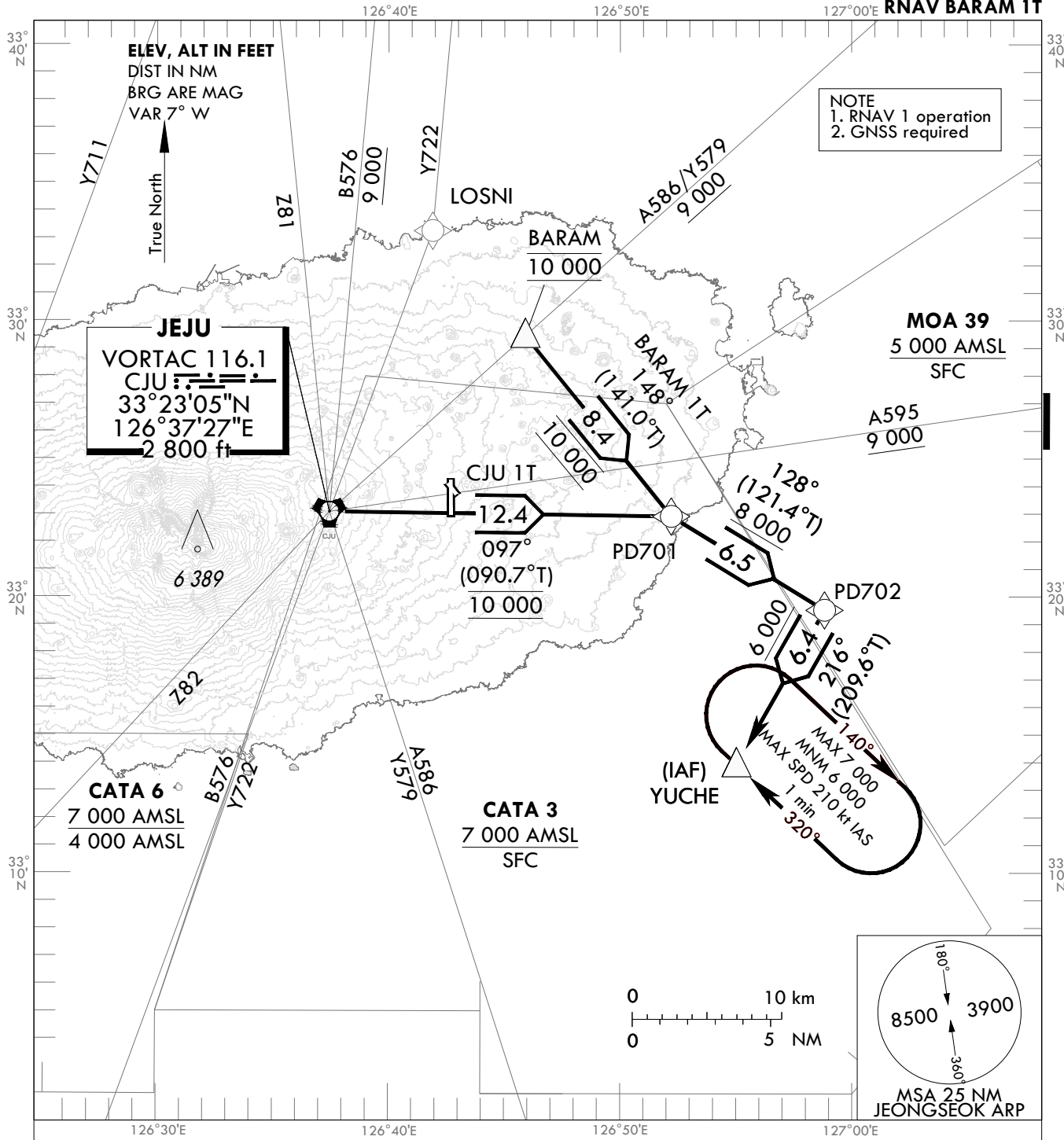


**STANDARD ARRIVAL CHART  
INSTRUMENT (STAR) - ICAO**

TRANSITION ALT 14 000  
TRANSITION LVL FL 140

JEJU APP 124.05  
JEONGSEOK TWR 124.35

**JEJU/Jeongseok(RKPD)  
RWY 01  
RNAV CJU 1T  
RNAV BARAM 1T**



**GENERAL INFORMATION**

1. Within JEJU TMA, maximum 250 kt IAS below 10 000 ft.
2. Maximum holding speed 210 kt IAS at YUCHE.

**RNAV CJU ONE TANGO ARRIVAL :** CJU - PD701 - PD702 - YUCHE

**RNAV BARAM ONE TANGO ARRIVAL :** BARAM - PD701 - PD702 - YUCHE

Change : Amended coordinate format.

JEJU/Jeongseok(RKPD)  
RWY 01  
RNAV CJU 1T RNAV BARAM 1T

AERONAUTICAL DATA TABULATION

Standard Instrument Arrival Procedure Coding Tables

**RNAV CJU 1T**

Serial Number	Path Descriptor	Waypoint Identifier	Fly-over	Course/Track °M(°T)	Distance (NM)	Turn direction	Altitude (ft)	Speed (kt)	Coordinates	VPA/TCH	Navigation specification	Remarks
001	IF	CJU	-	-	-	-	@10 000	-	33°23'04.6"N 126°37'26.8"E	-	RNAV 1	-
002	TF	PD701	-	097(090.7)	12.4	-	@10 000	-	33°22'54.9"N 126°52'12.5"E	-	RNAV 1	-
003	TF	PD702	-	128(121.4)	6.5	-	+8 000	-	33°19'31.4"N 126°58'49.6"E	-	RNAV 1	-
004	TF	YUCHE	-	216(209.6)	6.4	-	-7 000 +6 000	-	33°13'55.3"N 126°55'02.3"E	-	RNAV 1	IAF

**RNAV BARAM 1T**

Serial Number	Path Descriptor	Waypoint Identifier	Fly-over	Course/Track °M(°T)	Distance (NM)	Turn direction	Altitude (ft)	Speed (kt)	Coordinates	VPA/TCH	Navigation specification	Remarks
001	IF	BARAM	-	-	-	-	@10 000	-	33°29'27.6"N 126°45'53.9"E	-	RNAV 1	-
002	TF	PD701	-	148(141.0)	8.4	-	@10 000	-	33°22'54.9"N 126°52'12.5"E	-	RNAV 1	-
003	TF	PD702	-	128(121.4)	6.5	-	+8 000	-	33°19'31.4"N 126°58'49.6"E	-	RNAV 1	-
004	TF	YUCHE	-	216(209.6)	6.4	-	-7 000 +6 000	-	33°13'55.3"N 126°55'02.3"E	-	RNAV 1	IAF

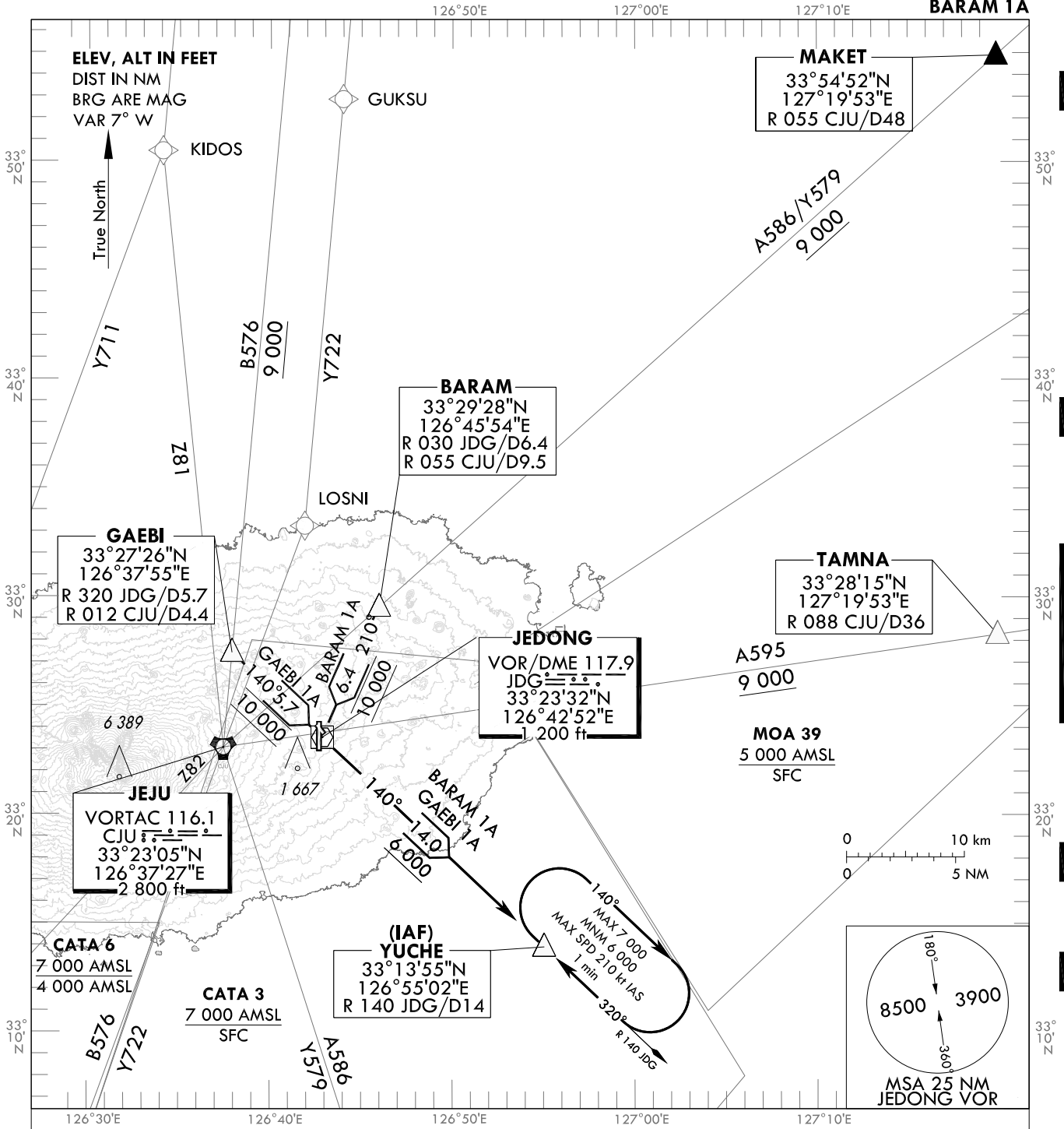
Change : Amended coordinate format.

STANDARD ARRIVAL CHART  
INSTRUMENT (STAR) - ICAO

TRANSITION ALT 14 000  
TRANSITION LVL FL 140

JEJU APP 124.05  
JEONGSEOK TWR 124.35

JEJU/Jeongseok(RKPD)  
RWY 01  
GAEBI 1A  
BARAM 1A



**GENERAL INFORMATION**

1. Within JEJU TMA, maximum 250 kt IAS below 10 000 ft.
2. Maximum holding speed 210 kt IAS at YUCHE.

DESIGNATOR	FROM	ROUTE	DESCENT ALTITUDE
GAEBI ONE ALPHA (GEB 1A)	B576	GAEBI - JDG - YUCHE	Cross JDG at 10 000 ft, YUCHE at or above 6 000 ft
BARAM ONE ALPHA (BRM 1A)	A586 Y579	BARAM - JDG - YUCHE	Cross JDG at 10 000 ft, YUCHE at or above 6 000 ft

Change : Amended coordinate format.

**INTENTIONALLY**

**LEFT**

**BLANK**